

**CMI  
Regional  
Conference**  
ST. LOUIS



Two-day Conference:  
**Curriculum Mapping: Train the Trainers**  
April 30 and May 1, 2009

One-day Pre-Conference:  
**Curriculum Mapping 101: The Nuts and Bolts?**  
April 29, 2009

Featuring Heidi Hayes Jacobs, Susan Udelhofen, Ann Johnson,  
plus Practitioner Breakout Sessions

**“Curriculum Mapping serves as the HUB and organizing force – allowing teachers and administrators to become dreamers and confident risk-takers in their quest to design a 21st Century curriculum for their students.”**

This dynamic two-day Workshop is an opportunity for participants to learn how the four critical phases\* of Mapping can serve as the organizational structure for designing high-quality training for teachers in their own school. Specific areas of focus that will be addressed in this workshop include:

- I **Laying the Foundation**– Developing a Shared Vision, Developing Professional Learning Communities
- II **Launching the Mapping Process**– Creating Individual Maps, Developing Consensus Maps, Initiating the Review Process, Adapting the Process for ESOL and Special Education
- III **Maintaining, Sustaining, and Integrating the Mapping Process**– Integrating Assessment Findings in the Maps, Active Literacy in Your Maps, Developing an Implementation Plan
- IV **Advanced Mapping Tasks**– Updating Your Maps with 21st Century Techniques

The two-day workshop will feature Dr. Heidi Hayes Jacobs, Dr. Susan Udelhofen, and Dr. Ann Johnson, nationally recognized leaders in Curriculum Mapping. They will model the use of the professional development maps, activities, and supporting materials that will provide participants with tools and strategies to take the process back to staff in their own school or district. In addition, teacher practitioners will share how they have used the maps to support the development of Professional Learning Communities and how they have adapted the process for ESOL and Special Education Populations.

**Participants will learn strategies to**

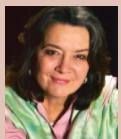
- develop quality Individual Maps.
- develop Consensus Maps.
- design Essential Questions.
- implement the Review Process.
- analyze assessment data for subject matter, skills, and literacy needs.
- develop a shared vision and implementation plan.
- update maps with 21st century tools.
- use the Curriculum Mapping modules to design high-quality training.
- integrate Professional Learning Communities in the Mapping process.
- develop a shared vision for Mapping.
- design an Implementation Map/Plan.
- integrate Mapping in Professional Learning Communities.
- adapt the Mapping process for ESOL and Special Populations.

**One day Pre-Conference: Curriculum Mapping 101: The Nuts and Bolts**

Curriculum Mapping 101: The Nuts and Bolts will be presented by Dr. Ann Johnson. Ann, the Director of Professional Development for Curriculum Designers and a former teacher and administrator, has helped schools across the country to implement mapping in their schools. She will use proven strategies and activities from the new book\* she co-authored with Heidi to teach the nuts and bolts of Mapping for those of you who are just beginning or for those of you who wish a refresher. Participants will learn about the purpose of mapping, the problems that the model can address, elements on a map, the range of different types of maps, and the Seven-Step Review Process developed by Dr. Jacobs. Questions that will be addressed in this one-day workshop include:

- What is Mapping?
- Why Map?
- What are basic tasks schools carry out with Mapping?
- How can Mapping impact student performance?
- How can Mapping serve as a HUB for all school improvement efforts?
- What strategies can be used to help staff better understand the purpose of Mapping?

\*Professional Development for Curriculum Mapping: Training Modules and Maps for Effective Implementation” (ASCD) by Dr. Heidi Hayes Jacobs and Dr. Ann Johnson.



**Dr. Heidi Hayes Jacobs** has served as an education consultant to schools and educational organizations nationally and internationally. Dr. Jacobs’ new book, “Active Literacy K-12: Cross-disciplinary Reading, Writing, Speaking, Listening in Every Classroom” was released in April 2006 by Eye-on-Education, Inc. She will take you through the process of Curriculum Mapping based on her best-selling books: “Mapping the

Big Picture: Integrating Curriculum and Assessment K-12” and “Getting Results With Curriculum Mapping,” plus the video series “Curriculum Mapping: Charting the Course for Content,” all published by ASCD. She is based in Rye, New York.



**Dr. Susan Udelhofen** is an experienced classroom teacher and national staff development leader who has provided consultation services throughout the United States to thousands of educators from small, large, rural and urban school districts, education agencies, colleges and universities. She is the author of the best-selling book, “Keys to Curriculum Mapping,” published by Corwin Press.



**Dr. Ann Johnson** is a national consultant with CMI, an experienced classroom teacher, administrator, and national presenter whose practical step-by-step systemic approach to implementing curriculum mapping is based on 13 years of success in a suburban school and two years in an urban school district in Iowa. She has coached leadership teams in the development of implementation plans, a training design, and the support structure to implement the mapping process. Dr. Johnson co-authored a chapter in Heidi Hayes Jacobs’ book, “Getting Results with Curriculum Mapping” and was featured in Dr. Jacobs’ DVD/Video, “Getting Results with Curriculum Mapping.”



**Verneda Edwards** is currently serving as Executive Director of Curriculum and Instruction for the Blue Valley School District in Overland Park, Kansas. The district serves approximately 21,000 students and 31 schools. Verneda has been a teacher, elementary principal and curriculum director. She brings school improvement experiences from small to large districts. The Blue Valley district has been involved with the school improvement process, including Curriculum Mapping, for five years.

# What they're saying about CM programs...

“Ann is amazing! She takes a practical view that really brings teachers along with mapping while, at the same time, making certain that the systems picture is well defined. She has had great success coaching all levels of the system on how to get the most from the mapping process.”

Dr. Bena Kallick  
Education Consultant  
Westport, Connecticut

“The opportunity to learn from Dr. Jacobs is an educational feast for the mind. Her work in curriculum mapping and literacy across the curriculum is distinctive and helps lead instructional improvements for all students. Administrators and teachers need to be influenced by her thinking. Her passion is contagious and provocative.”

Dr. Jackie Taylor  
Deputy Superintendent  
Byram Hills School District  
Armonk, New York

“Using Curriculum Mapping in our district has enabled our teachers to closely align their classroom lessons and instruction to our state testing objectives and focus on mastery. Our district scores in both reading and math are improving as we continue to work towards our alignment goals.”

Dr. Lisa Horn  
El Reno Public Schools

## REGISTRATION

### Curriculum Mapping Pre-Conference – April 29, 2009 Curriculum Mapping Two-day Conference – April 30 and May 1, 2009

**Location:** University of Missouri, St. Louis, North Campus, One University Boulevard, St. Louis, MO 63121

#### Schedule

##### Wed., April 29, 2009

PRE-CONFERENCE: Curriculum Mapping 101

Featuring Jeanne Tribuzzi

Basics for people new to mapping or those wanting a refresher.

Questions to be addressed in this one-day workshop:

- What is mapping?
- What is entered on a map?
- What are basic tasks schools carry out with mapping?

##### Thurs.–Fri., April 30 and May 1, 2009

TWO-DAY CONFERENCE

- Laying the foundation
- Launching the process / Getting started
- Sustaining and integrating the mapping process
- Advanced mapping tasks

#### Register Now!

District/School: \_\_\_\_\_

Mailing address: \_\_\_\_\_

Contact person: \_\_\_\_\_

Contact tel: \_\_\_\_\_

Fax: \_\_\_\_\_

E-mail (Confirmations via E-mail): \_\_\_\_\_

Registering Individual: \_\_\_\_\_

Check enclosed, ck#: \_\_\_\_\_

(Make checks payable to Curriculum Designers, Inc.)

Amex/Visa/MasterCard Exp Date: \_\_\_\_\_

Card#: \_\_\_\_\_

Signature: \_\_\_\_\_

Make checks payable to: Curriculum Designers, Inc., 26 Allendale Drive, Rye, NY 10580. Contact Veronica@curriculumdesigners.com with any questions. Purchase Orders and Credit Cards accepted.

#### Registration Fees

Includes all conference materials and meals. Fees per person:

Day one only– \$225.

Days two & three– \$440.

All three days– \$540.

Discounted rates for groups of 20 or more.

#### Accommodations

Contact: Renaissance St. Louis Airport Hotel, 9001 Natural Bridge Rd., St. Louis, MO 63134.  
Tel: 1-314-429-1100, toll-free: 1-888-340-2594.  
Ask for the Curriculum Designers Inc. Room Block.

#### Cancellation

Cancellations cannot be accepted after April 15, 2009. No refunds will be given to cancellations received on or after that date. Refunds will be given prior to April 15 minus a \$25.00 processing fee. All cancellations must be faxed in writing to: 914-921-0164.

**Terms:** Registration accepted on a full-payment, first-come, first-served basis only. Note: If you do not receive a confirmation notice, please email [Veronica@curriculumdesigners.com](mailto:Veronica@curriculumdesigners.com) to determine the status of your registration. Please do not book non-refundable airline tickets without confirmation that your registration has been received and processed. Curriculum Designers Inc. will not be held responsible for airfare booked before confirmation is received.

# CURRICULUM DESIGNERS, INC.

26 Allendale Drive, Rye, NY 10580

[www.curriculumdesigners.com](http://www.curriculumdesigners.com)

